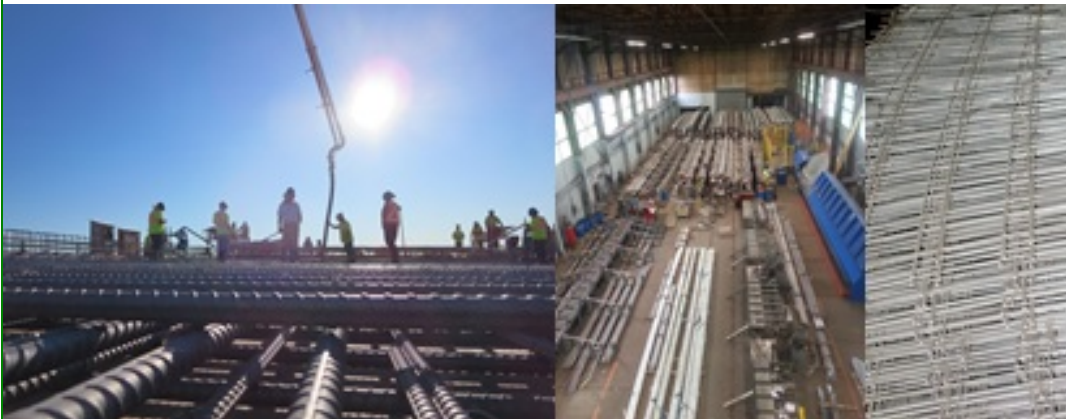




# SSR Stainless Digest

January



## Dear Customer/Industry Contact

Accelerating the repetitive production of precast products with stainless pre-assembled mats and cages contributes to reduced project delivery time by supplying precast elements of structures ready for installation.



There appears to be greater demand in the U.S. for stainless steel products such as standard mat sizes, perhaps due to the rebuilding of the nation's infrastructure, especially bridge structures, with material that is resilient. By building structures that outlast the design life of projects, there is great value added to the asset management plans of public sector agencies.

Accelerated precast construction (APC) is the use of innovative scheduling, delivery, design, manufacturing and construction methods to reduce onsite construction time and costs, while improving safety and reducing road user impacts. Inclusion of standard-sized stainless steel mats and engineered cages in precast concrete structural design is becoming a component of APC on many projects.

SSR will be at World of Concrete. Learn more about our stainless steel products and assembly facilities. We are at booth N2918 in the North Hall.

Sincerely,

**Kevin Cornell, General Manager**  
**Salit Specialty Rebar**

## In This Issue

[Stainless Steel in r improvements to Da Hoan Bridge](#)

[Plan to meet SSR s reps at World of Cor 2016](#)

[Stainless welded w for resilient infrastru](#)

[2304 Duplex |UNS- rebar adds to the des of structures](#)

## Look for us...



World of Concrete is held February 2-5 in i Vegas. **SSR's booth number is N2918 in North Hall.** SSR's s staff will be at the bo answer questions ab stainless steel reinfor products and service

## Stainless Steel in major

## The Rebar Stand

