

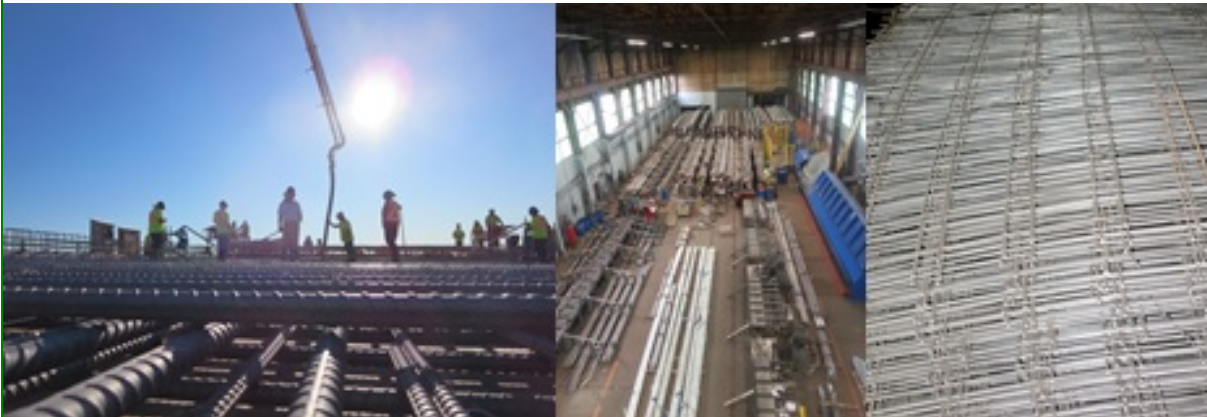
Having trouble viewing this email? [Click here](#)

SALIT SPECIALTY REBAR

SALIT GROUP OF COMPANIES

SSR Stainless Steel Digest

October 2016



Dear Customer/Industry Contact

The time of year is fast-approaching when SSR representatives are present at America's top annual trade shows and education events for the concrete industry. Our friends in the precast and poured-in-place concrete construction, and steel fabrication industries will be attending World of Concrete and The Precast Show to learn about new products and services. We will be there to share knowledge about stainless steel rebar, welded wire fabric and pre-assemblies.



Our plants in Niagara Falls and Buffalo, NY are shipping products across the United States of America and Canada. Senior staff are well-informed about specifications, standards, traditional applications and novel ways of applying stainless steel products. Our services have expanded to include pre-assemblies for accelerated precast construction projects for bridges and interchanges.

Although our brand is strong and reassures customers that we are a true partner by building strong relationships with customers, suppliers, industry organizations and associations, we are evolving. For over five generations of family-ownership, Salit Steel always looked for ways to be better and expand into new products and markets. The Salit Group of Companies care, making everyone we deal with feel a part of the Salit family while continuing Salit's legacy of giving back to the communities in which we locate our businesses.

Salit has embarked on a corporate-wide project to refresh its identity and enhance its well-established brand. The logo of Salit Specialty Rebar has changed to reflect a united group of

In This Issue

[Milwaukee's Zoo Interchange](#)

[Plan to meet SSR sales reps at The Precast Show 2017](#)

[Stainless welded wire mats for resilient infrastructure](#)

[2304 Duplex |UNS-S32304 rebar adds to the design life of structures](#)

Look for us...



The World of Concrete is an annual trade show for the commercial construction industry. It is held each year for four days in Las Vegas, Nevada. WOC is a show where products, resources, and information related to concrete construction are shared and displayed. More than 1,800 companies and suppliers from all over the world come together in the

companies based on the the founding principles of Salit Steel.

SALIT SPECIALTY REBAR

SALIT GROUP OF COMPANIES

Sincerely,

Kevin Cornell, General Manager
Salit Specialty Rebar

Milwaukee's Zoo Interchange

The Zoo Interchange in Milwaukee is a freeway Interchange on the west side of the city, southeast of the 200 acre Milwaukee County Zoo. It was built in 1963, as one of the first Interstate Highway projects in Wisconsin. Forming the junction of I-94, I-894, and US 45, it is the busiest interchange in the state.



Source:

<http://projects.511wi.gov/zoo-interchange-project/153-2/>

The first three years of the project was focused on upgrading the arterial streets to handle additional traffic generated by closures on the interstate when work began on the Interchange itself in late 2014. The project included contracts for 21 bridges, 30 walls, 11 noise barriers, concrete pavement, 20 million lbs of structural steel, steel tub flyover bridges with stainless steel concrete deck reinforcement, pre-stressed concrete girder bridges, earthwork, structure and pavement demolition, intelligent transportation systems, large diameter drilled shafts, MSE walls with precast panels, utility relocation and pile supported foundations.

Salit Specialty Rebar is supplying 4,000,000 lbs of 2304 Duplex stainless steel rebar for primarily deck and barrier wall material.

Photo Gallery



Source:

<http://www.cptechcenter.org/ncc/F2015%20NCC/Luck-Zoo%20Interchange.pdf>

Las Vegas Convention Center to show, demonstrate, do business, and answer questions about what they are showing.

There are demonstrations and seminars. The demonstrations are actual work site conditions where attendees can see the product that they are interested in put to the test. Seminars are held throughout the event. Some of the seminars are certification programs where attendees can be certified in different targeted fields.

When: January 17-19, 2017 - Las Vegas, NV.

SSR is at Booth N3120.

Visit with us and talk stainless steel rebar and welded wire mesh.

Look for us...



The Precast Show is the largest precast-specific trade show in North America and the one place where you can find the industry's most important suppliers and foremost equipment experts under one roof. When: March 2-4, 2017 - Cleveland, OH.

SSR is at Booth 779. Visit with us and talk stainless steel rebar and welded wire mesh.

Social Media

Connect with SSR on its social media sites to receive timely news about the company and its products and services, along with industry news.

We need your help to build the value of our Facebook

The Zoo Interchange is a major transportation link in Wisconsin, and a significant component of America's Interstate Highway network. The core materials for the interchange are concrete and steel. It is designed to be a resilient asset for the city and state for generations.

See the animation:

<https://www.youtube.com/watch?v=oifWOSqQhG4>

Kosciuszko Bridge replacement - the first of its type in New York

Construction continues to replace the Kosciuszko Bridge, alternatively known as the Brooklyn-Queens Expressway (BQE), with a new nine-lane bridge which will consist of two eastbound spans, one westbound span, a bike path, and a walkway. Two new cable-stayed suspension bridges will replace the existing, aging steel-truss span. The cable-stayed bridge design makes the new bridge the first of its type in New York City, since the Brooklyn Bridge which has a hybrid suspension/cable-stayed design. The New York State Department of Transportation will build a six-lane highway next to the current bridge. The six-lane highway will connect the Brooklyn-Queens Expressway to the new bridge before the old bridge is torn down. The old bridge will remain in use until its demolition in 2017.

On May 23, 2014, a \$554,770,000 design-build contract for the first phase was awarded to a team consisting of Skanska, which will be managing partner, Ecco III of Yonkers; Kiewit Corporation of Nebraska; and HNTB of Kansas as the lead design firm. It is the largest single contract ever awarded by the New York State Department of Transportation. The first new bridge will be erected adjacent to the south side of the existing bridge and is scheduled to open in late 2016. Once the first new span is complete, all BQE traffic will be shifted onto it, and crews will begin demolishing the old bridge. The second cable-stayed span to be completed in 2019 will rise in the original bridge's footprint. The extra lanes were required because the Kosciuszko Bridge has become a traffic bottleneck.

The bridge gets its name in honor of Thaddeus Kosciuszko, an engineer from Poland who fought in the American Revolutionary War.

Fort Miller contracted Salit specialty Rebar to supply rebar for the precast and Brooklyn Rebar contracted SSR for the cast-in-place reinforcement. For both contracts, SSR supplied approximately 2,500 tons of XM-28, a high manganese low nickel austenitic stainless steel for saltwater marine environments where reinforced concrete may be exposed to chlorides and other de-icing salts.

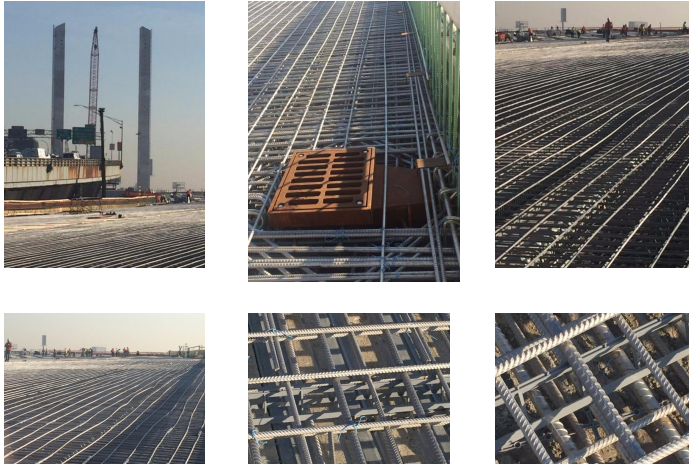
[Photo Gallery](#)

presence.

Please visit and LIKE our Facebook page. This is one way to stay informed about SSR's stainless steel reinforcing products and services.



[Facebook](#)



Photos: Courtesy of Salit Specialty Rebar

SSR will be exhibiting at World of Concrete January 17-19

The World of Concrete is an annual trade show for the commercial construction industry. WOC is a show



where products, resources, and information related to concrete construction are shared and displayed. More than 1,800 companies and suppliers from all over the world come together in the Las Vegas Convention Center to show, demonstrate, do business, and answer questions about what they are showing.

SSR's booth number is N3120. SSR's senior staff will be at the booth to answer questions about stainless steel reinforcement products and services.

Want to know about World of Concrete? Visit worldofconcrete.com

Plan to meet SSR sales reps at NPCA's Precast Show 2017

The Precast Show is the largest precast-specific trade show in North America and the one place where you can find the industry's most important suppliers and foremost equipment experts under one roof.



SSR's booth number is 779. SSR's senior staff will be at the booth to answer questions about stainless steel reinforcement products and services.

Want to know about The Precast Show? Visit <http://precast.org/theprecastshow/>

Stainless steel welded wire mesh mats for resilient infrastructure

Standard-sized stainless steel welded wire mesh mats are the latest product introduced by Salit Specialty Rebar <http://stainlessrebar.com/> to the poured-in-place and precast concrete markets in the USA and Canada.



The new product is available in two different styles of mesh produced using two different alloys. One product is 6X6 D2.9/D2.9 (gage) that would be assembled in 6-foot x 12-foot mats. The other product is 4X4 D4/D4 (gage) available as 6-foot x 12-foot mats. These sizes are the most popular in carbon mesh. All stainless wire mesh is branded with "SALIT" so buyers know that the wire mesh they are using is from a source in the Salit Group of Companies.

[Click here](#) or on the title to download a Technical Information Sheet (TechInfo Sheet 01 15)

2304 Duplex |UNS-S32304 Stainless rebar adds to the design life of structures

2304 Duplex |UNS-S32304 stainless is a lean duplex stainless steel that has a microstructure consisting of austenite and ferrite phases. This duplex microstructure and the chemical composition of 2304 Duplex stainless results in an excellent combination of strength and corrosion resistance.



The high strength capability of minimum yield strength of 75 ksi (518 MPa) for 2304 Duplex stainless rebar is an added economical advantage. In the annealed and hot rolled conditions, 2304 Duplex stainless is ferromagnetic.

2304 Duplex stainless possesses good resistance to general corrosion in many acid environments, chloride stress corrosion cracking, pitting and crevice corrosion.

Applications

Rebar has been a primary application for 2304 Duplex stainless. Specific rebar applications have included bridge decks, barrier and retaining walls, anchoring systems and dowels, chemical plant infrastructure, coastal piers and wharves, bridge parapets, sidewalks and bridge pilings. Another application for 2304 Duplex stainless includes bridge tie wire.

[Click here](#) or on the title to download a Technical Information Sheet (TechInfo Sheet 03 15)

About Salit Specialty Rebar

Thank you for buying our products and enlisting our services. We appreciate your business.

SSR is North America's stainless steel rebar specialist. Now that we have introduced stainless steel mesh and mats to our product line we look for the support of our clients to build our brand as North America's specialist for stainless mesh and mats.

Our corporate vision is one of leadership, innovation and consistently exceeding expectations. This vision is backed by extensive experience in the industry. As with all members of the Salit Steel family, we pride ourselves on providing unparalleled customer service.

Salit Specialty Rebar

3235 Lockport Road
Niagara Falls, NY



Las Vegas Convention Center

WOC Exhibit Hall Hours

Tuesday, January 17-Thursday, January 19

9:30 am -5:00 pm

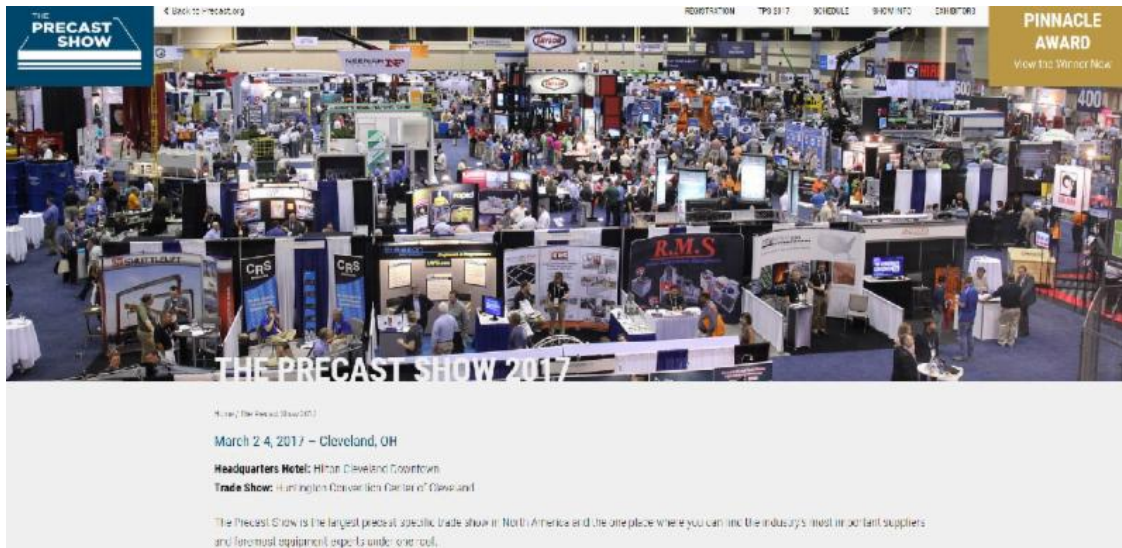
NEW! Friday 9:00 am - 12:00 pm

Salit Specialty Rebar is North America's leading stainless steel rebar supplier and fabricator. With over 10 million pounds of stainless steel rebar in stock at any given time, SSR can fabricate and ship an order from stock. There's no waiting for a mill rolling, no buying more than you need, and no scrap. Salit Specialty Rebar is dedicated to fast efficient hassle-free service.

SSR Booth N3120

worldofconcrete.com/Attendee/ExpoHall/BoothDetails/1154003

The Precast Show



Huntington Convention Center of Cleveland

March 2-4

SSR Booth 779

<http://precast.org/theprecastshow/>

Salit Specialty Rebar, 3235 Lockport Road, Niagara Falls, NY 14305

[SafeUnsubscribe™ {recipient's email}](#)

[Forward this email](#) | [Update Profile](#) | [About our service provider](#)

Sent by kcornell@stainlessrebar.com in collaboration with



Try it free today