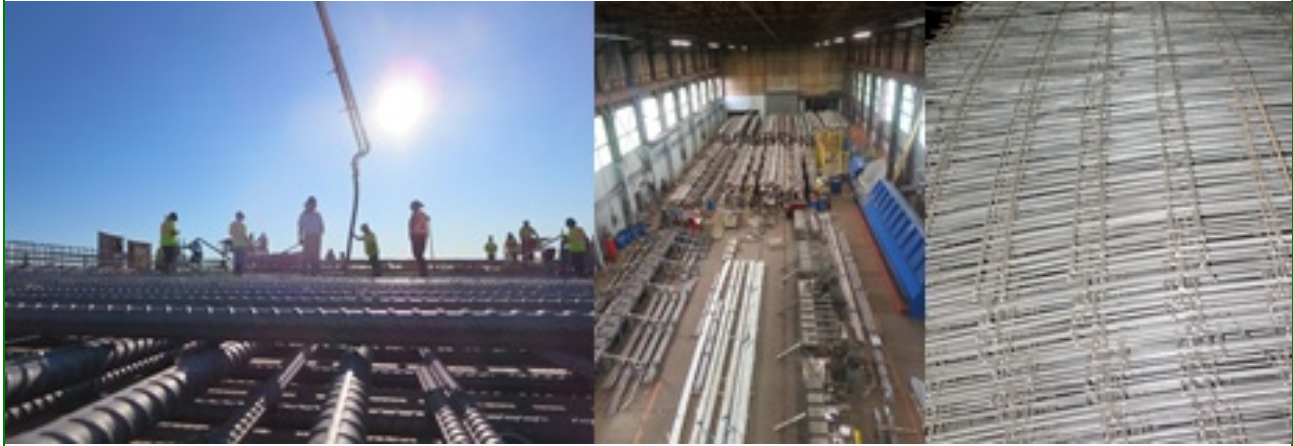




SSR Stainless Digest

July 2015



Dear Customer/Industry Contact

It is important that we keep you updated about our products, services and projects. The Salit group of companies has many cross-over products - especially in the pre-assembly centers at Salit Specialty Rebar and StelCrete. Our e-newsletter spotlights stainless products - especially pre-assembled stainless steel mesh.



This Issue of SSR Stainless Digest features our contract with Fort Miller Co Inc. for the supply of rebar for precast concrete elements and Brooklyn Rebar LLC for the cast-in-place elements of the new nine-lane Kosciuszko Bridge that connects Queens to Brooklyn, NY. SSR is supplying approximately 2,500 ton of XM-28 UNS #S24100 N32, a high-manganese, low-nickel, nitrogen strengthened austenitic stainless steel.

In addition, we are providing progress update on the replacement of the 100-year old Walker Street Bridge between Kittery and Portsmouth Naval Shipyard on Seavey Island, Maine.

You will hear from us periodically. At the bottom of this page, you can unsubscribe.

Sincerely,

Kevin Cornell, General Manager
Salit Specialty Rebar

In This Issue

[Kosciuszko Bridge replacement - the first of its type in New York](#)

[Century bridge replaced with stainless steel reinforcement](#)

[Buffalo Pre-assembly facility expands with two additional machines](#)

[Stainless welded wire mats for resilient infrastructure](#)

[2304 Duplex UNS-S32304 rebar adds to the design life of structures](#)

Featured Article

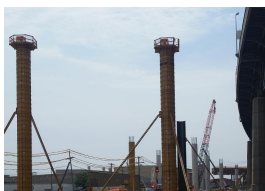
Kosciuszko Bridge replacement
the first of its type in New York City

Read a summary about the supply of approx. 2,500 ton of XM-28 UNS #S24100 N32, a high manganese low nickel austenitic stainless steel for saltwater marine environments where reinforced concrete may be

Kosciuszko Bridge replacement

the first of its type in New York City

Construction is underway to replace the Kosciuszko Bridge, (Brooklyn-Queens Expressway-BQE), with a new nine-lane bridge which will consist of two eastbound spans, one westbound span, a bike path, and a walkway.



Fort Miller contracted Salit Specialty Rebar to supply rebar for the precast elements and Brooklyn Rebar for the cast-in-place reinforcement. For both contracts, SSR supplied approximately 2,500 tons of XM-28 UNS #S24100 N32, a high manganese low nickel austenitic stainless steel for saltwater marine environments where reinforced concrete may be exposed to chlorides and other de-icing salts.

As of June 28, Brooklyn Rebar, LLC had taken delivery of approximately 60 tons for pier caps, 20 tons for an abutment wall and 1,000 tons of deck bars (#4,5,6) for the Brooklyn side of the structure.

[Click here](#) to view a time lapse video of the design simulation, and [click here](#) for a project sheet with progress photos of stainless rebar use.

Century bridge replaced with stainless steel reinforced structure

A 100-year old Walker Street Bridge between Kittery and Portsmouth Naval Shipyard on Seavey Island, Main is being replaced. Replacement of the bridge began in the winter of 2014 and is expected to take two years to complete.

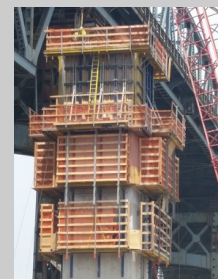
Salit Specialty Rebar supplied approximately 80 tons of Duplex 2205 rebar to HarMac Rebar and Steel (a division of A.H. Harris) located in Fryeburg Maine who were supplying the General Contractor, Cianbro, one of the largest construction and construction services companies in the USA.

Duplex 2205 is a two-phase, ferritic, austenitic 22% chromium, 3% molybdenum, 5 to 6% nickel alloyed stainless steel that is the most widely used duplex stainless steel grade characterized by high yield strength. Duplex 2205 is characterized by good fatigue strength, as well as outstanding resistance to stress corrosion cracking, crevice, pitting, erosion, and corrosion in severe environments.

Buffalo Pre-assembly facility expands with two additional machines

Opened in October, 2013, the 40,000 square-foot facility employs 16 people. The operation is set up for two 10-hour shifts, six to seven days each week.

exposed to chlorides and other de-icing salts.



Look for us...

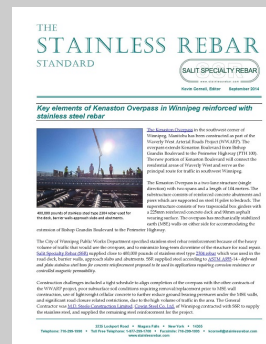


The 2015 Western Bridge Engineers' Seminar will be hosted by the Nevada Department of Transportation.

The Seminar will be held on September 9-11, 2015 in Reno. The purpose of the seminar is the exchange of information between government agencies, consultants, contractors, educators, and suppliers on current subjects important to the design, construction, and maintenance of bridges.

SSR will have a booth on the exhibit floor, so check the program and visit our booth to learn about stainless rebar and mesh products and SSR services.

The Rebar Standard



[Click here](#) to download the September, 2014 Issue

In 2015, two more machines were added to the facility's production line to add more options for pre-assembled stainless steel products.

The Radius Machine was purchased from R.M.S. to form a radius without pre-bending the bar and in most cases in a one-step operation. See the 1 min. 16 sec. demonstration about the features of the machine at https://www.youtube.com/watch?v=119mvA_moU.

The R.M.S. Spiral Machine spirals rebar without the need to pre-bend the leading end of the bar. See the 1 min. 12 sec. demonstration about the features of the machine at <https://www.youtube.com/watch?v=hr23kfBhoG4>.

Stainless steel welded wire mesh mats for resilient infrastructure

Standard-sized stainless steel welded wire mesh mats are the latest product introduced by Salit Specialty Rebar <http://stainlessrebar.com/> to the poured-in-place and precast concrete markets in the USA and Canada.



The new product is available in two different styles of mesh produced using two different alloys. One product is 6X6 D2.9/D2.9 (gage) that would be assembled in 6-foot x 12-foot mats. The other product is 4X4 D4/D4 (gage) available as 6-foot x 12-foot mats. These sizes are the most popular in carbon mesh. All stainless wire mesh is branded with "SALIT" so buyers know that the wire mesh they are using is from a source in the Salit Group of Companies.

[Click here](#) or on the title to download a Technical Information Sheet (TechInfo Sheet 01 15)

2304 Duplex |UNS-S32304 Stainless rebar adds to the design life of structures

2304 Duplex |UNS-S32304 stainless is a lean duplex stainless steel that has a microstructure consisting of austenite and ferrite phases. This duplex microstructure and the chemical composition of 2304 Duplex stainless results in an excellent combination of strength and corrosion resistance.

The high strength capability of minimum yield strength of 75 ksi (518 MPa) for 2304 Duplex stainless rebar is an added economical advantage. In the annealed and hot rolled conditions, 2304 Duplex stainless is ferromagnetic.

The Rebar Standard is a publication of Salit Specialty Rebar that is distributed to SSR clients and industry contacts. The publication details applications of stainless steel products in many kinds of structures including bridges, medical facilities and marine works. You can subscribe to the publication by contacting Shari Powley at: spowley@stainlessrebar.com

Social Media

Connect with SSR on its social media sites to receive timely news about the company and its products and services, along with industry news.



[Facebook](#)

2304 Duplex stainless possesses good resistance to general corrosion in many acid environments, chloride stress corrosion cracking, pitting and crevice corrosion.



Applications

Rebar has been a primary application for 2304 Duplex stainless. Specific rebar applications have included bridge decks, barrier and retaining walls, anchoring systems and dowels, chemical plant infrastructure, coastal piers and wharves, bridge parapets, sidewalks and bridge pilings. Another application for 2304 Duplex stainless includes bridge tie wire.

[Click here](#) or on the title to download a Technical Information Sheet (TechInfo Sheet 03 15)

About Salit Specialty Rebar

Thank you for buying our products and enlisting our services. We appreciate your business.

SSR is North America's stainless steel rebar specialist. Now that we have introduced stainless steel mesh and mats to our product line we look for the support of our clients to build our brand as North America's specialist for stainless mesh and mats.

Our corporate vision is one of leadership, innovation and consistently exceeding expectations. This vision is backed by extensive experience in the industry. As with all members of the Salit Steel family, we pride ourselves on providing unparalleled customer service.

Salit Specialty Rebar

3235 Lockport Road
Niagara Falls, NY



[Forward this email](#)



This email was sent to glee@aglmarketing.com by kcornell@stainlessrebar.com | [Update Profile/Email Address](#) | Rapid removal with [SafeUnsubscribe™](#) | [Privacy Policy](#).



Try it FREE today.

Salit Specialty Rebar | 3235 Lockport Road | Niagara Falls | NY | 14305